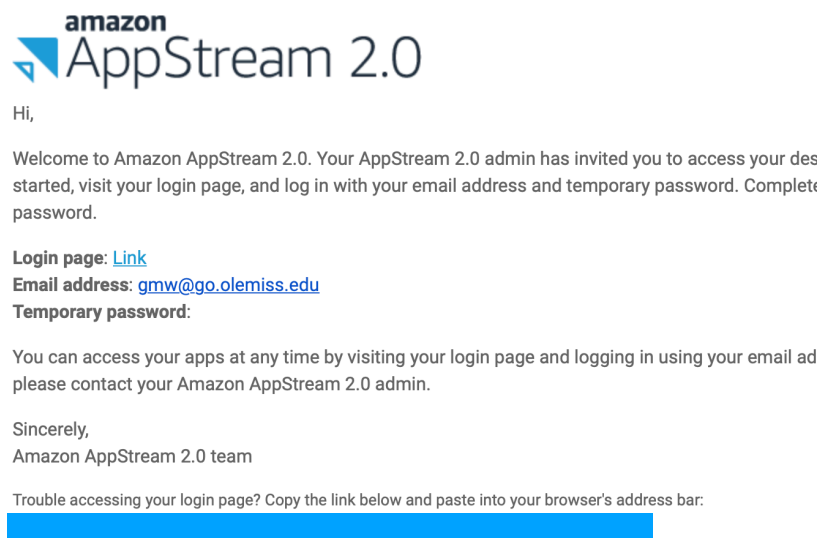


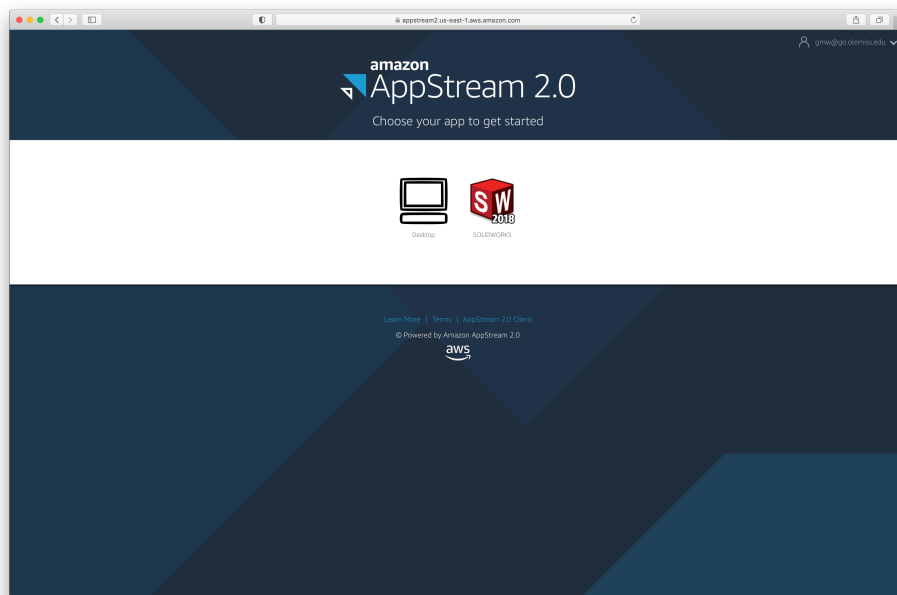
Logging in to Solidworks BME 200

IMPORTANT: You will lose your Solidworks file if you log out before making a copy of it on Google Drive. See instructions below.

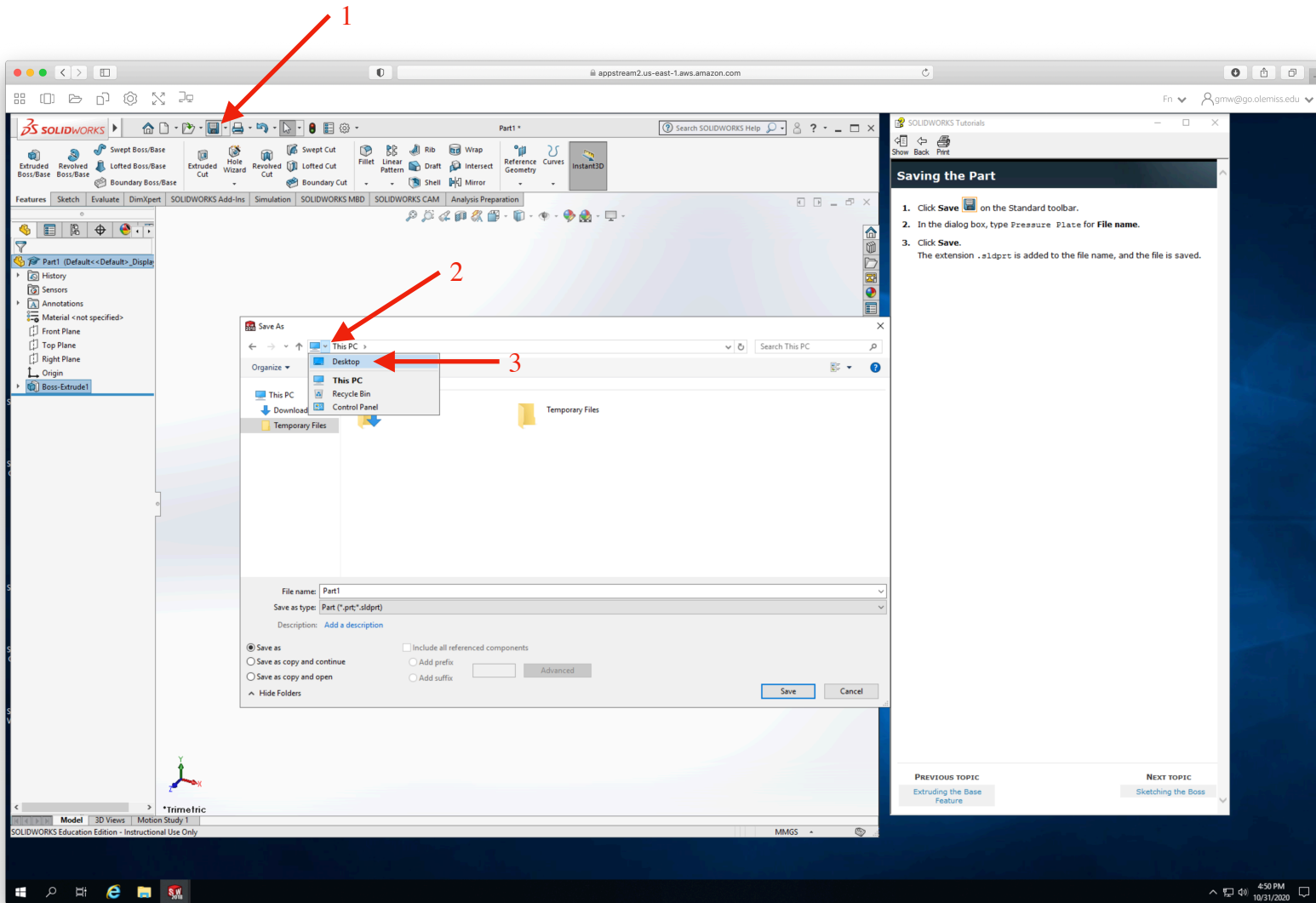
1. Expect two emails from Amazon. You may ignore the second email. The first email contains a link to the login page along with your username and a temporary password. Click on the link to the Login page.



2. Follow the instructions to change your password.
3. It takes about 2 minutes for the server to prepare your desktop.
4. You will be presented with a screen that looks like this. Click on Solidworks.

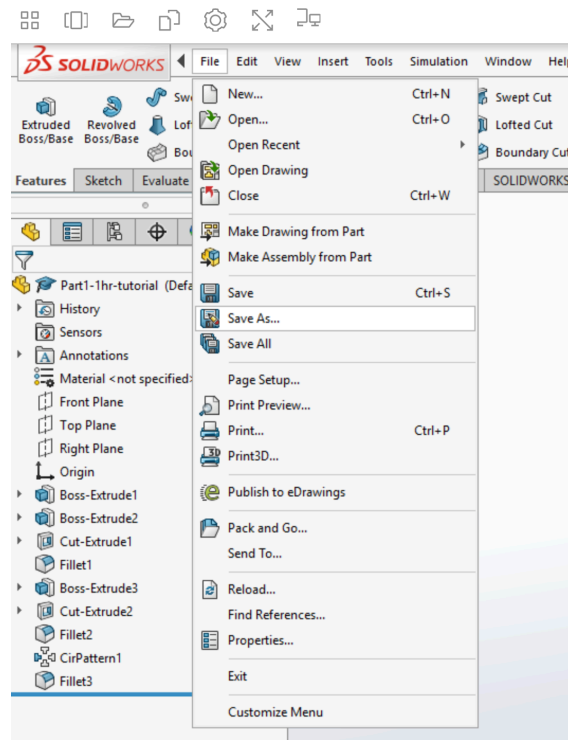


5. Solidworks takes about 2 minutes to load.
6. Use Solidworks. Save your file occasionally to preserve your progress. Save your file to the **Desktop** so that you can easily transfer it to Google Drive when done with Solidworks.

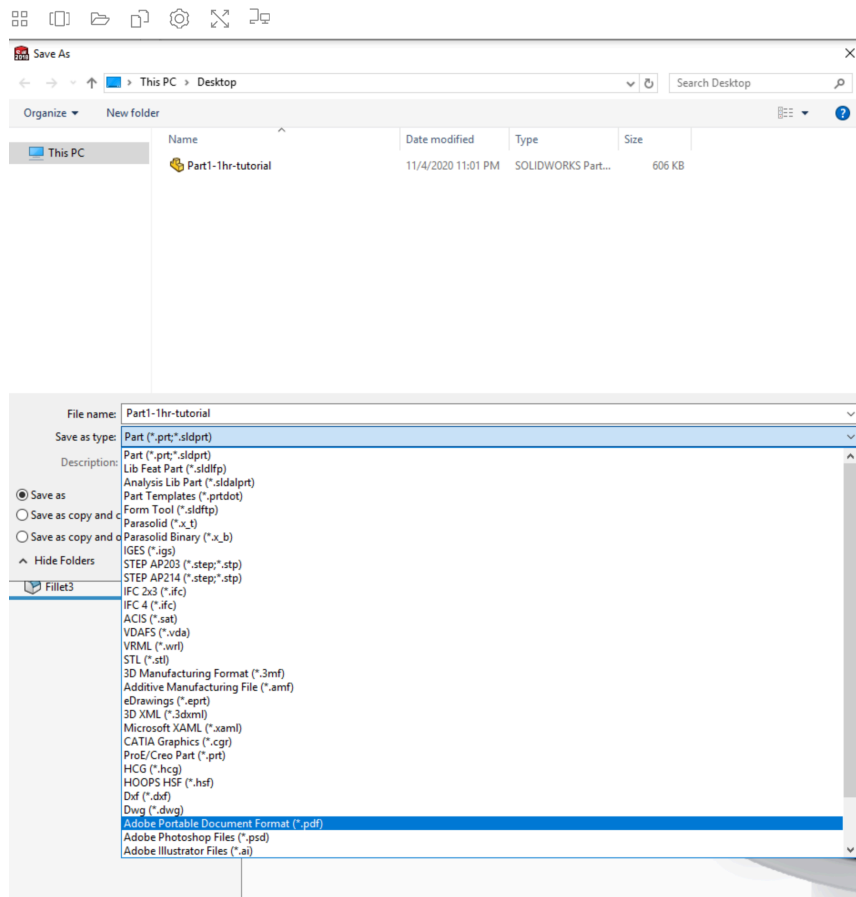


Saving your Solidworks File as a PDF

1. Go to File -> Save As



2. Under **Save as type:** choose PDF and save to the desktop. Then, transfer to Google Drive.



Transferring your Solidworks file to Google Drive

1. The server will erase your Solidworks file once you log out. In order to preserve your work, copy your file to Google Drive before disconnecting.
2. Close Solidworks.
3. Open Firefox.
4. Log in to Google Drive.
5. Copy your file from the Desktop to Google Drive.

Disconnecting

1. Click on your username in the upper-right corner and choose disconnect.

